



## 125 Newbould Lane

Broomhill, Sheffield, S10 2PL

£1,600 PCM

A most attractive Georgian property situated in the heart of the very popular and fashionable area of Broomhill close to excellent amenities including the main University and Hospitals. With off road parking. Available 31st JULY 2023,

- Fashionable and Sought After Area
- 3 Double Bedrooms
- 2 Reception Rooms
- Modern Fitted Kitchen with Stone Flagged Flooring
- Large Bathroom
- Reception Hallway
- Secure Off Road Parking
- Southerly Facing Garden
- Available 31st JULY 2023
- COUNCIL TAX BAND: C

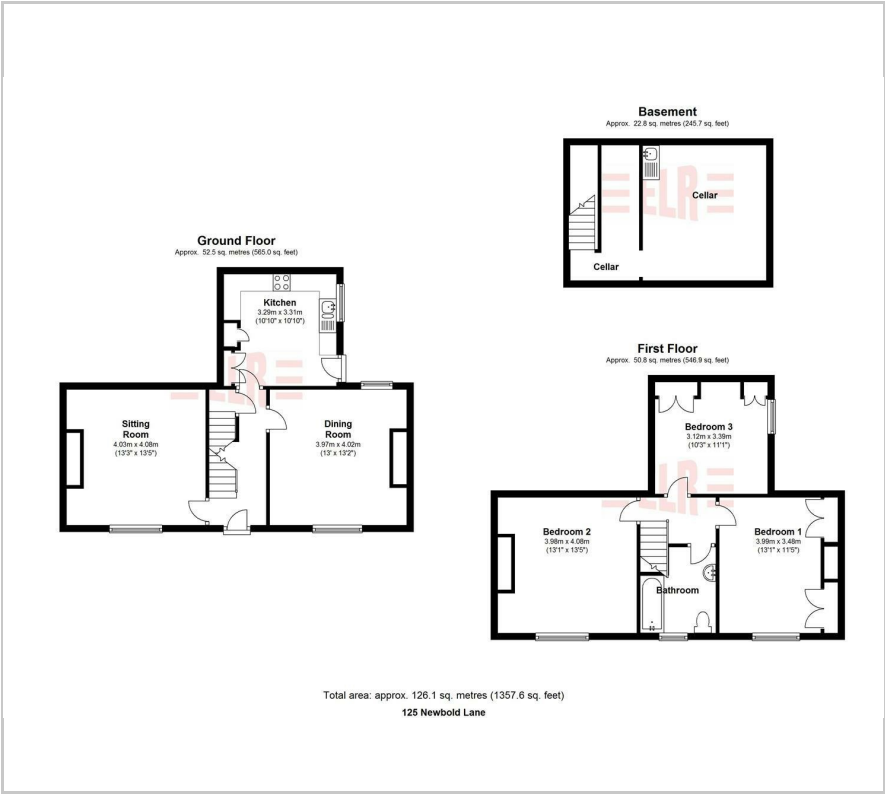
### Viewing

Please contact our ELR Europa Link Office on 01142689900 if you wish to arrange a viewing appointment for this property or require further information.





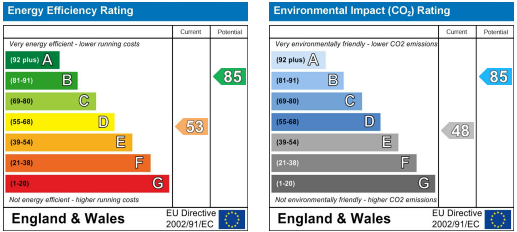
Floor Plan



Area Map



Energy Efficiency Graph



These particulars, whilst believed to be accurate are set out as a general outline only for guidance and do not constitute any part of an offer or contract. Intending purchasers should not rely on them as statements of representation of fact, but must satisfy themselves by inspection or otherwise as to their accuracy. No person in this firm's employment has the authority to make or give any representation or warranty in respect of the property.